



# Sonoma Water

**Clean. Reliable. Essential. Every Day.**

## West County Water Quality and Recycled Water Supply Feasibility Study

Public Workshop

June 17, 2026

    [sonomawater.org](https://sonomawater.org)



# AGENDA

1. Opening Remarks
2. Study Overview
3. Straw Proposal Presentation
4. Q&A on Straw Proposal
5. Small Group Discussions
6. Small Group Report Out
7. Wrap Up/Next Steps



# Project Scope of Work



1. A high-level feasibility assessment to evaluate potential regional projects
  - Deliverable: Feasibility Study Report
  - (available online at <https://www.sonomawater.org/westco untystudy>)
2. A stakeholder program to help inform and identify community support
  - Deliverable: Project Advancement Report



Timeframe	Components
Fall 2024	<ul style="list-style-type: none"> <li>• Service Area Description (TAC)</li> </ul>
Winter 2024/25	<ul style="list-style-type: none"> <li>• Stakeholder Committee (Committee) Meeting #1: Study Purpose and Initial Discussion of Study Concepts, Planning Area, and Charter</li> <li>• Wastewater Regionalization Alternative Review Workshop (TAC)</li> </ul>
Spring 2025	<ul style="list-style-type: none"> <li>• Committee Meeting #2: Introduce Initial Regionalization Alternatives</li> </ul>
Summer 2025	<ul style="list-style-type: none"> <li>• Committee Meeting #3: Continued Discussion of Regionalization Alternatives</li> <li>• Shortlisted Alternatives Workshop - Define Recommended Regionalization Alternatives – (TAC)</li> <li>• Evaluate the potential for regional projects to serve unsewered communities (TAC)</li> </ul>
Fall 2025	<ul style="list-style-type: none"> <li>• Committee Meeting #4: Refined Regionalization Alternatives and Discussion of Unsewered Community Clusters</li> <li>• Unsewered Communities, Recycled Water Supply, and Climate Change Resiliency Workshop (TAC)</li> </ul>
Winter 2025/26	<ul style="list-style-type: none"> <li>• Committee Meeting #5: Review and Discuss Recommended Regionalization Alternatives</li> <li>• Draft Feasibility Study</li> <li>• Committee Meeting #6: Review and Discuss Draft Feasibility Study Comments.</li> <li>• Revised Draft Feasibility Study</li> </ul>
Spring 2026	<ul style="list-style-type: none"> <li>• Committee Meeting #7: Review Revised Draft Feasibility Study and Finance and Governance Information for Project Advancement Report</li> <li>• Final feasibility study</li> </ul>
June 2026	<ul style="list-style-type: none"> <li>• Community Workshop: The Future of Flushing – Workshop on West County Sewer Regionalization</li> </ul>
August 2026	<ul style="list-style-type: none"> <li>• Committee Meeting #8: Project Advancement Report Presentation</li> </ul>



MAJOR MILESTONES	Estimated Schedule
Submit Final Feasibility Study Report to the North Coast RWQCB	05/29/2026
Stakeholder Committee/Community Workshop	06/17/2026
Stakeholder Committee Meeting #8: Project Advancement Report Presentation	8/18/2026
Draft Project Advancement Report	08/31/2026*
Submit Final Project Advancement Report to the North Coast RWQCB	10/30/2026



\*Tentative

# Project Advancement Report

1. Introduction
2. Summary of Feasibility Study Findings
3. Stakeholder Committee Recommendations
4. Funding Considerations
5. Implementation Plan
6. Conclusions and Recommendations



# Study Overview

*Kathryn Gies, West Yost*



# Alternatives Overview

Local Alternatives	Export Alternatives	Combined Alternatives
1A: Two Local Facilities (RRCSD; FWD)	2A: Export to Windsor	3A: Local RRCSD + FWD/GCSD/OCSD flows to Laguna WWTP
1B: One facility (RRCSD)	2B: Export to the Laguna WWTP	3B: Local FWD/GCSD WWTP and RRCSD flows to Windsor WWTP
1C: One facility (FWD)	Alternative 2C: Export to Windsor and Laguna	

*The green shaded boxes represent shortlisted alternatives*

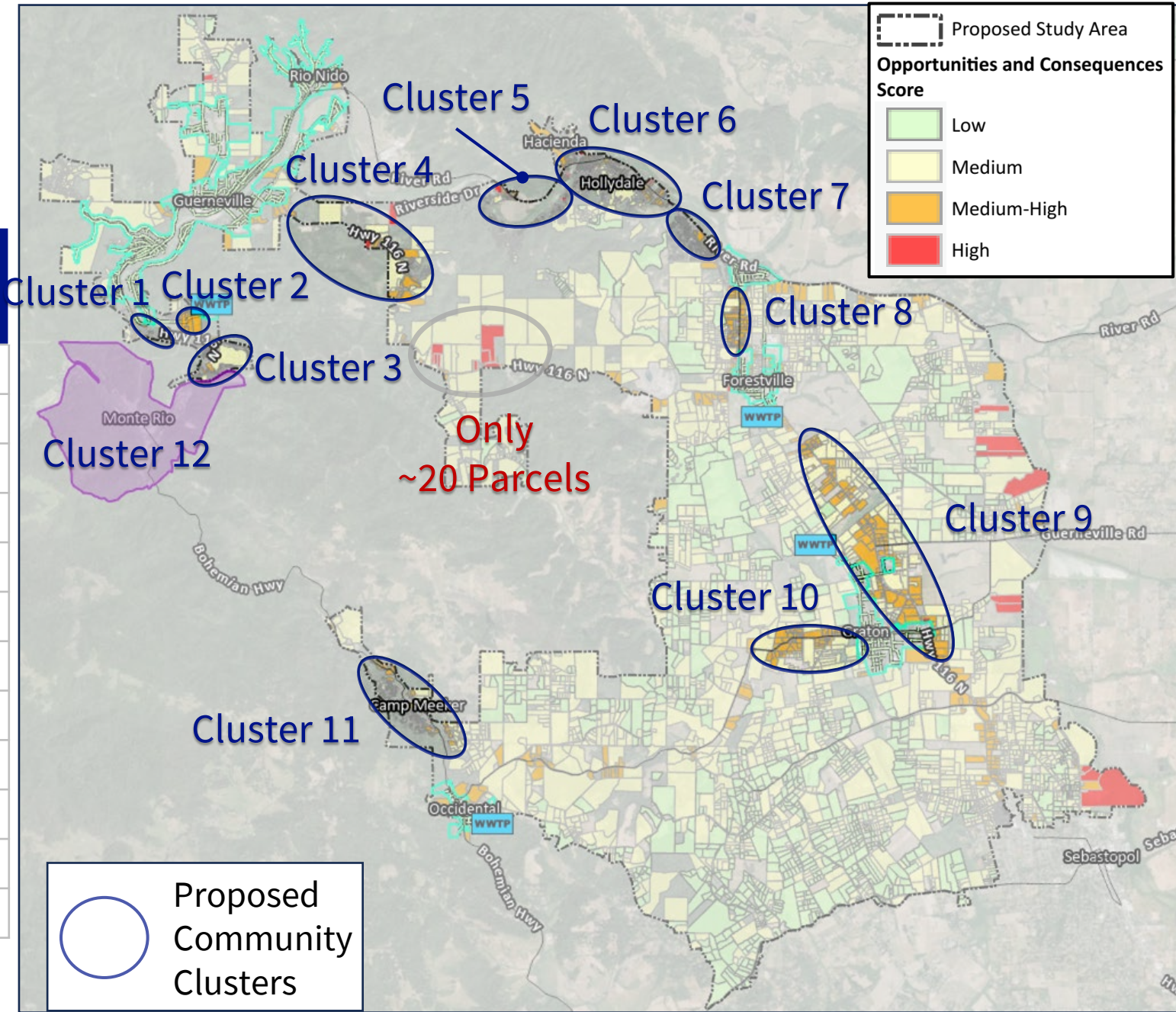


# Recommended Community Clusters

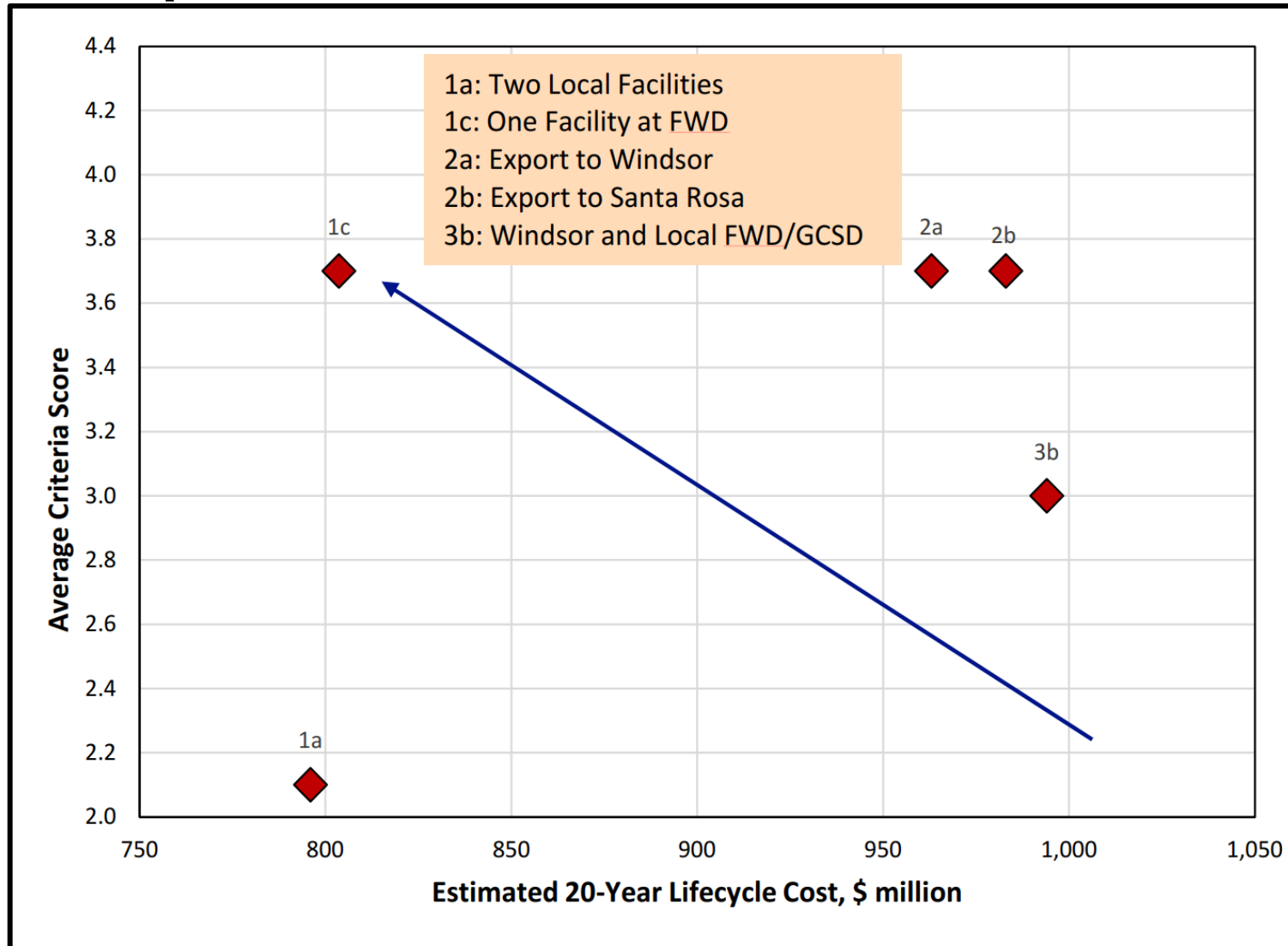
ID	Name	Approx. No. of Parcels
1	Guerneville South of River	50
2	Guerneville North of River	50
3	Northwood	165
4	Hwy 116 East of Guerneville	55
5	Summerhome Park Road	65
6	Hacienda and Hollydale (DACs)	335
7	River Road North of Forestville	360
8	Forestville	100
9	Hwy 116 East of Graton	135
10	Graton West	60
11	Camp Meeker (DAC)	340
12	<b>Monte Rio/Villa Grande</b>	780



*Please note that the number of parcels and cluster boundaries are defined for evaluation purposes only. Values shown are both approximate and preliminary.*



# Comparison of Alternatives



- 1c is the clear best alternative
- 1a is cost competitive but has a lower qualitative ranking.
- "Modified 1a" should be further investigated
- The Export Alternatives (2a, 2b, and 3b) have significantly higher lifecycle costs



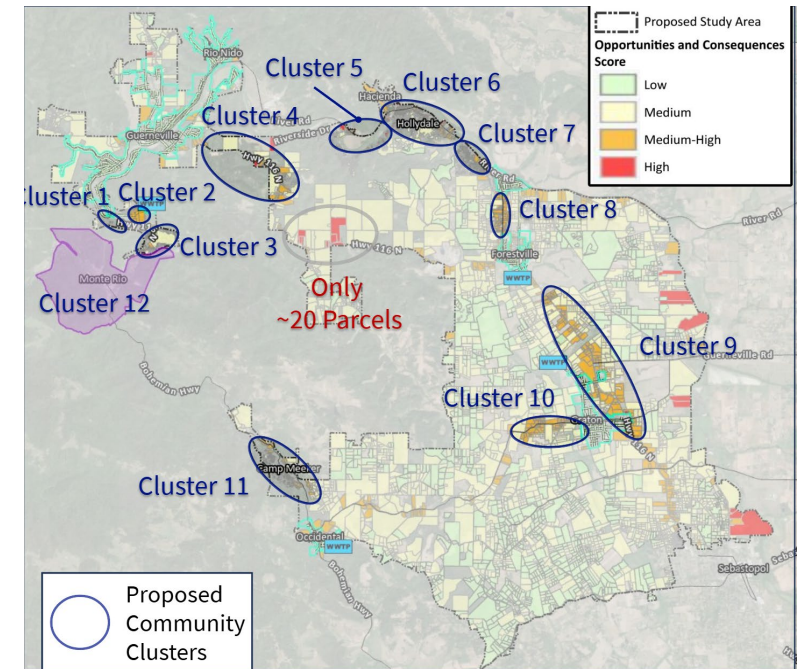
# Modified Alternative 1a

- **Identical to Alternative 1a, with two key modifications:**
  - FWD/GCSD treatment plant would be upgraded to an advanced biological nutrient removal system to allow continued seasonal discharge of recycled water into tributaries of the Russian River.
  - RRCSD will prioritize I&I improvements within their collection system as a precursor to accepting additional flows from outside the service area
- Integrates financial benefits provided under Alternative 1a with qualitative scoring criteria benefits under Alternative 1c.
- Preliminary assessment suggests that the total project costs would be lower than Alternative 1a and 1c.



# Key Findings and Recommendations for Community Clusters

- Identified clusters are a good starting point for future evaluations.
- Connecting existing unsewered parcels to a centralized WWTP will require multi-agency coordination, funding partnerships, and new governance structures.
- Management and operations consolidation strategies with respect to the individual community collection systems should be evaluated to optimize efficiency.
- Local wastewater agencies can support these activities by structuring their planning efforts and future projects in a manner that provides for the potential to accept unsewered flows in the future.
- Agencies can also support by better defining costs and procedures for connection of unsewered parcels that are outside of their current service areas.



# Potential Costs for New Wastewater Collection and Treatment Infrastructure (Per Connection)

- **Cluster's 1, 2, 3, and 12:**  
Directing flow to the RRCSD (i.e., Alternative 1a) is lowest cost
- **Remaining clusters:**  
Without the RRCSD anchor, financial and logistical support will be needed for transmission main construction.
- **DFA's Septic-to-Sewer Grant Funding for Disadvantaged Communities (DACs):**
  - \$175,000 (\$0.18 M) per residential connection
  - Discretion for up to \$200,000 (\$0.2 M) per residential connection for "good cause"
  - Priority projects under \$5 million have no per-residential-connection limit

ID	Name	Number of ESDs	Alternative 1a <sup>(a)</sup>
1	Guerneville South of River	55	0.187
2	Guerneville North of River	58	0.214
3	Northwood	196	0.179
4	Hwy 116 East of Guerneville	119	0.259
5	Summerhome Park Road	103	0.269
6	Hacienda and Hollydale	443	0.239
7	River Road North of Forestville	454	0.208
8	Forestville	173	0.213
9	Hwy 116 between Forestville and Graton	161	0.204
10	Graton West	70	0.236
11	Camp Meeker	376	0.211
12	Monte Rio/Villa Grande	943	0.153
<b>Total ESDs</b>		<b>3,151</b>	

Costs are shown in units of million \$

*The blue shaded boxes represent clusters that are assumed to connect to the new, combined Graton/Forestville system*



# Potential Financial Assistance

2026/2027 Intended Use Plan, or IUP



## Connecting Communities:

- **Grant cap:** \$30 million *per project*
- **Total funding cap per project:**  
\$30 million grant + \$50 million low-interest loan = \$80 million
- Each separate "community cluster" DAC can be treated as separate "project" if separable scope, schedule, budget, and benefiting community

## Receiving Communities

- Can **also** receive up to \$10 million in *0% interest-rate incentive financing* per connecting community/wastewater system, capped at \$50 million over five years.
  - These funds cover improvements that benefit the receiving system.
- Additional Grants Available:
  - Projects that are "Addressing a Violation":  
\$30 million and \$60,000 per residential connection
  - "Regionalization" projects:  
\$30 million and \$175,000 per residential connection  
(discretion up to \$200,000 per residential connection)
  - These maximums do not stack



## Potential Grant Funding (Each 5-year period)

13 Community Clusters

(separating Monte Rio and Villa Grande):

- 13 x \$30 million = \$390 million

3 receiving agencies:

- 3 x \$30 million = \$90 million

## Potential Loan Financing

13 Community Clusters

(separating Monte Rio and Villa Grande):

- 13 x \$50 million = \$650 million  
(2-3% interest)

3 receiving agencies:

- 3 x \$50 million (5 connecting agencies) =  
\$150 million  
(0% interest)

*Values shown assume that all communities are designated as small DACs (<20,000 population and meet the MHI or sewer-rate affordability test)*

# Straw Proposal Overview

*Parastou Hooshialsadat, Sonoma Water*



# Straw Proposal

- Presents a phased implementation strategy for the Modified Alternative 1A
- Organize near-term, mid-term, and long-term actions
- Addresses governance, infrastructure improvements, agency coordination, and connections of unsewered community clusters
- Focused on a regionalized approach



# Straw Proposal Color Key

Yellow = Governance

Purple = Technical

Green = Finance



# Governance Approach

PHASE 1: NEAR-TERM	PHASE 2: MID-TERM	PHASE 3: LONG-TERM
Execute regionalization Memorandum of Understanding (MOU)	Expand existing districts for the connections of high-priority community clusters	Expand existing districts for the connections of medium-priority community clusters
Outreach to and prioritization of unsewered community clusters (high, medium and low)	Work with medium- priority community clusters to define implementation strategy and governance needs	Work with low-priority communities to define implementation strategies and governance needs
Explore governance pathways for development of new agencies and for potential agency consolidations		Expand existing districts for the connections of low-priority community clusters
Board actions for existing districts and County committing to regionalization strategies (Modified Alternative 1a)		Evaluate the potential benefit of a new regional district
Work with high-priority community clusters to define implementation strategies and governance needs		

# Russian River County Sanitation District Improvements

PHASE 1: NEAR-TERM	PHASE 2: MID-TERM	PHASE 3: LONG-TERM
Complete force main and lift station improvements	Design, construct highest-priority I&I improvements for 5 Million Gallons Daily (MGD) peak flow	Continue implementing long-term I&I improvements
Complete Inflow & Infiltration (I&I) study and prioritization plan	Construct WWTP capacity and expansion improvements	Coordinate connections of medium-priority community clusters
Complete Wastewater Treatment Plant (WWTP) capacity analysis	Complete planning for recycled water irrigation acreage expansion	Modify NPDES* permit for the connections of medium-priority community clusters
Secure funding for and design WWTP capacity and expansion improvements	Coordinate Cluster 12 connection	Coordinate connections of low-priority community clusters
Secure funding for collection system capacity and I&I improvements	Design and construct recycled water expansion	Modify NPDES* permit as needed for the connections of low-priority community clusters
	Modify NPDES* permit as needed for the connection of Cluster 12	



\*National Pollutant Discharge Elimination System

# Graton Community Service District-Occidental County Sanitation District -Forestville Water District Consolidation (GCSD-OCSD-FWD)

PHASE 1: NEAR-TERM	PHASE 2: MID-TERM	PHASE 3: LONG-TERM
Complete OCSD-GCSD pipeline design	Execute MOU to consolidate OCSD and GCSD	Coordinate connections of medium-priority community clusters
Secure funding for OCSD-GCSD pipeline construction	Design and construct combined treatment facility that can accommodate connections for high-priority clusters	Modify NPDES permit as needed for the connections of medium-priority community clusters
Secure funding and complete evaluation for a combined treatment facility	Obtain new NPDES permit for the combined treatment facility with high-priority cluster connections	Coordinate connections of low-priority community clusters
Execute MOU to evaluate governance structure and consolidate FWD and GCSD	Coordinate connections for high-priority community clusters	Coordinate connections of low-priority community clusters
Secure funding for the design and construction of new combined treatment facility		Modify NPDES permit as needed for the connections of low-priority community clusters



# Unsewered Community Clusters

PHASE 1: SHORT-TERM	PHASE 2: MID-TERM	PHASE 3: LONG-TERM
Evaluate and identify the appropriate existing agency to serve each community cluster	Design and construct connection for Cluster 12	Design and construct connections for the medium-priority community clusters
Secure funding for the connection of Cluster 12 (Monte Rio/Villa Grande)	Design and construct connections for other high-priority community clusters	Secure funding for the connections of low-priority community clusters
Secure funding for the connections of other high-priority community clusters	Secure funding for the connections of medium-priority community clusters	Design and construct connections for the low-priority community clusters



# Small Group Exercise

*Sam Magill, Sacramento State University  
All Participant*



# World Café Guidelines

- Groups are self-organized ... vote with your feet for your first table topic:
  - Wastewater and community services governance
  - Project implementation
  - Funding and finance
- Follow table facilitator guidelines for how to participate.
- After 20 minutes, move on to the next topic.
- At the end of 3 rounds, we'll report out on key themes!

**Question for All:** What does a successful project roll-out look like to you?

# The World Cafe Etiquette

1 Focus on  
What  
Matters

2 Contribute  
Your  
Thinking

3 Speak  
Your Mind  
and Heart

**HAVE  
FUN!**

4 Listen  
to  
Understand

5 Link  
and  
Connect  
Ideas

6 Listen  
Together for  
Insights and  
Deeper  
Questions



# World Café Questions

## Governance

- Consider the straw proposal for the governance approach. What do you like about it? What concerns you?
- Is there an alternative governance approach that you feel may be better, and why?
- Identifying low, medium, and high priority unsewered community clusters is an important step in connecting these areas to a regionalized system. What criteria should be used to determine this ranking?

## Engineering/Project Implementation

- Consider the physical infrastructure elements of the straw proposal. What do you like about it? What concerns you?
- The straw proposal lays out a sequence of implementation actions designed to create a robust regionalized wastewater system.
  - Does this sequence make sense?
  - Which elements would you like to see happen sooner?
  - Do you feel there critical sequencing elements missing that are important to identify now?

## Funding and Finance

- What types of services or regionalization outcomes might make the cost of the project more acceptable to the community (i.e., more reliable wastewater treatment, improved water quality in the river, protecting the character of existing communities, revitalizing the Monte Rio commercial core, etc.)?
- If the project can only be partially funded, which elements do you see as essential and/or most desirable to complete with the limited available funding?
- What would be most helpful for unsewered parcels from a cost perspective (i.e., clear estimates of anticipated service fees, no/low interest loans, grants, connection incentives, etc.)?

# Report Out

- Opportunity to discuss common themes from each topic
- Which themes resonate with you?
- What else would you like to add?

**Question for All:** What does a successful project roll-out look like to you?

# Thank you!

**Project Manager/Engineering Lead:**  
Parastou Hooshialsadat  
[parastou.hooshialsadat@scwa.ca.gov](mailto:parastou.hooshialsadat@scwa.ca.gov)

**Outreach and Communications Lead:**  
Andrea Rodriguez  
[andrea.rodriguez@scwa.ca.gov](mailto:andrea.rodriguez@scwa.ca.gov)

**Committee Facilitator:**  
Sam Magill  
[s.magill@csus.edu](mailto:s.magill@csus.edu)

Project Website: <https://www.sonomawater.org/westcountystudy>

## Stakeholder Committee Meeting: August 18, 2026





**Sonoma  
Water**



[sonomawater.org](http://sonomawater.org)